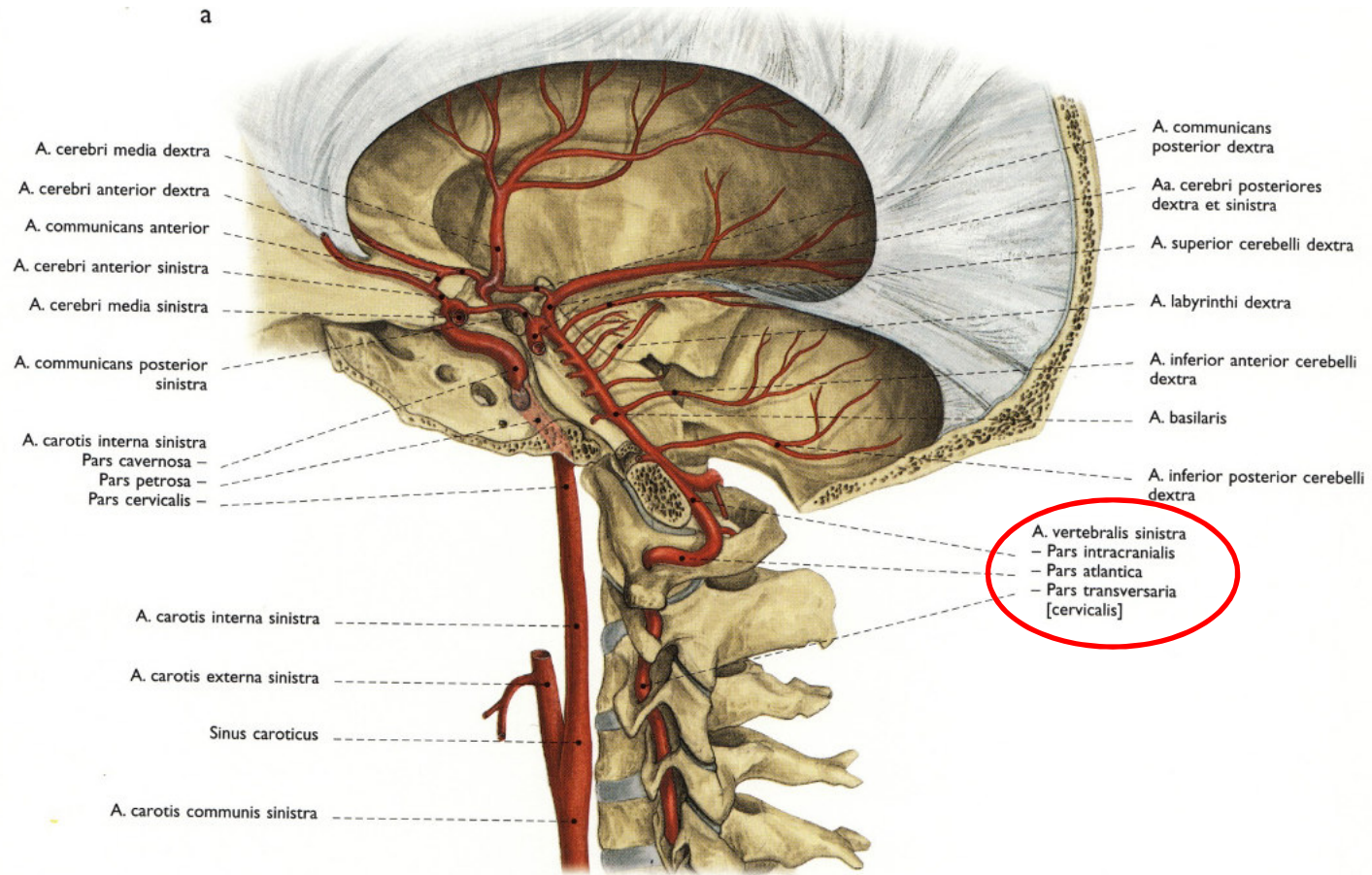


# HWS-Schulter-Arm

Dr. Nadine Hainz

# A. vertebralis

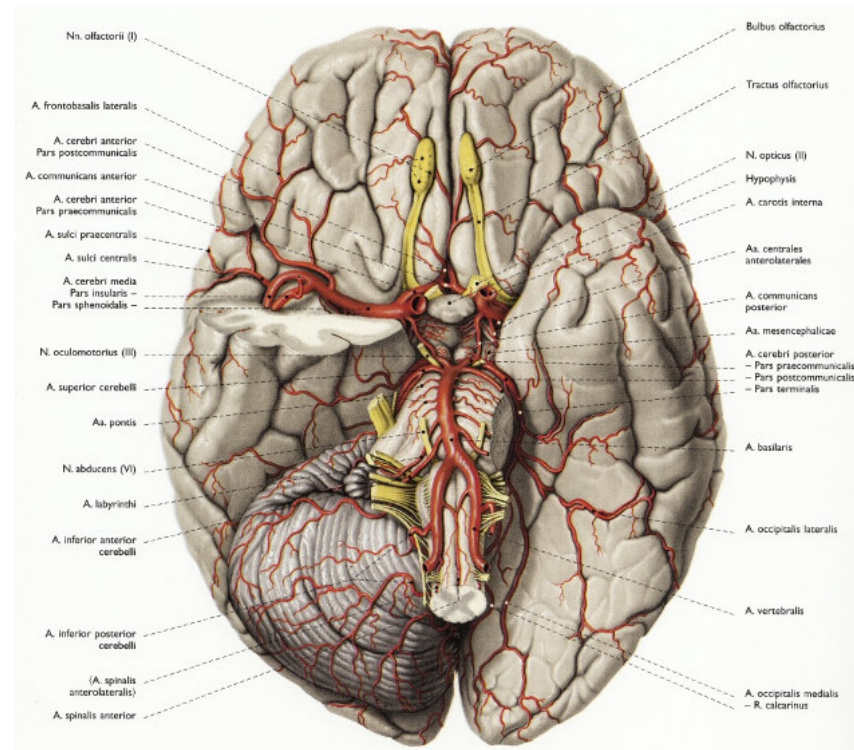
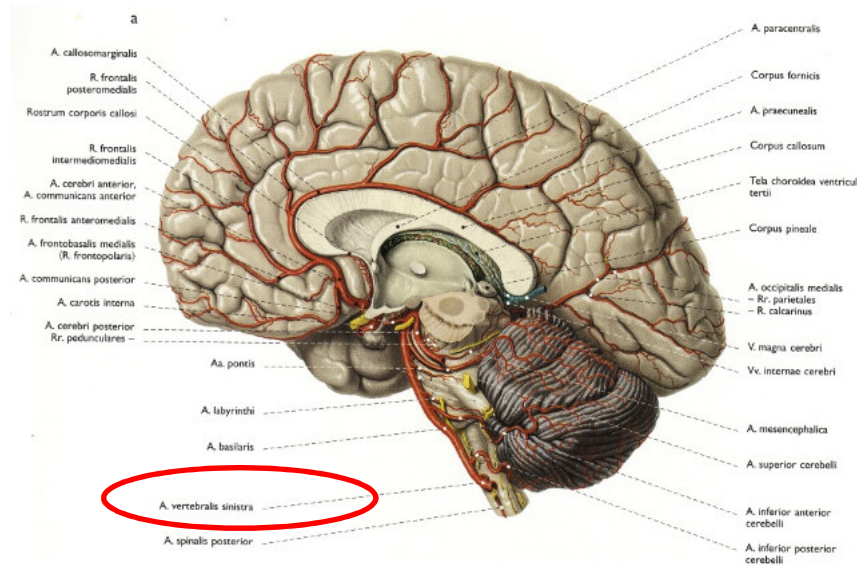


aus A. subclavia

durch Foramen transversarium der Querfortsätze

Oberhalb des Atlas durch Foramen magnum in Schädel

# A. vertebralis



mit A. carotis interna Versorgung des Gehirns

HWS: Äste für tiefe Halsmuskeln, Rückenmark, Rückenmarkshäute

# A. Vertebralis

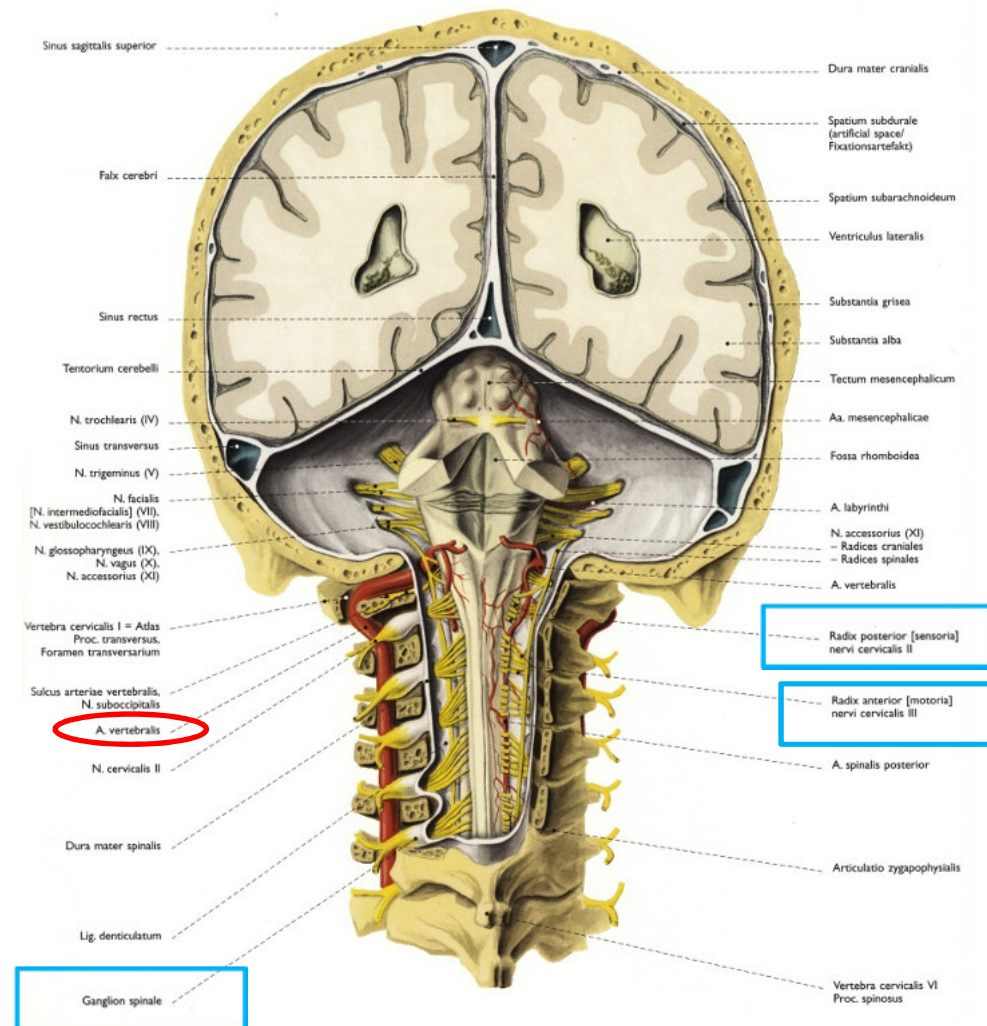
90% unterhalb C6

2% C7

5% C5

2% C4

1% C3



289 Truncus encephali et Dura mater

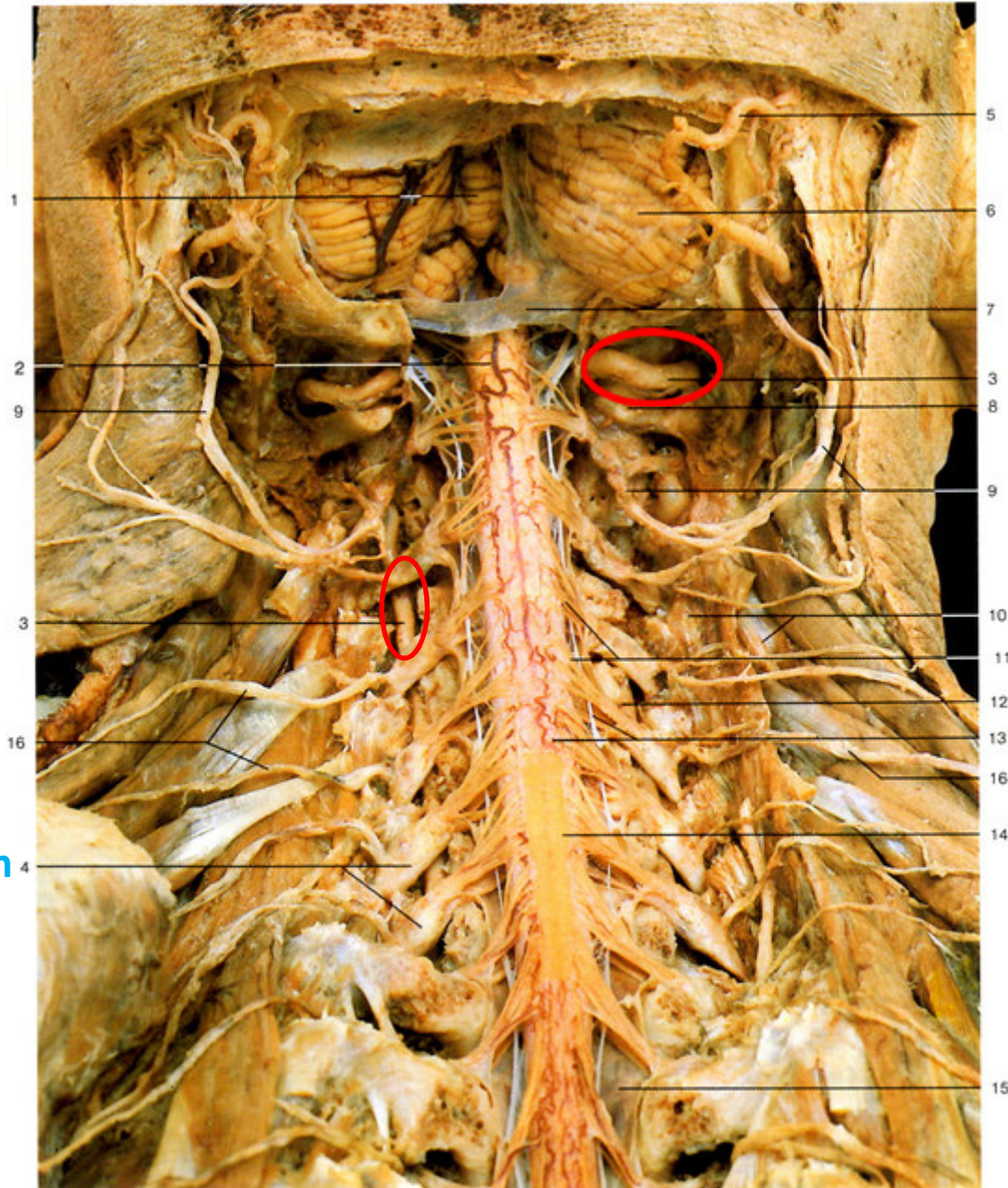
289 Brain stem and dura mater (75%)  
Coronal section through the head and neck. The neural arches were removed. Dorsal aspect

289 Hirnstamm und harte Hirnhaut (75%)  
Frontalschnitt durch Kopf und Hals. Der Wirbelkanal ist von dorsal eröffnet. Dorsalansicht



**A. vertebralis**

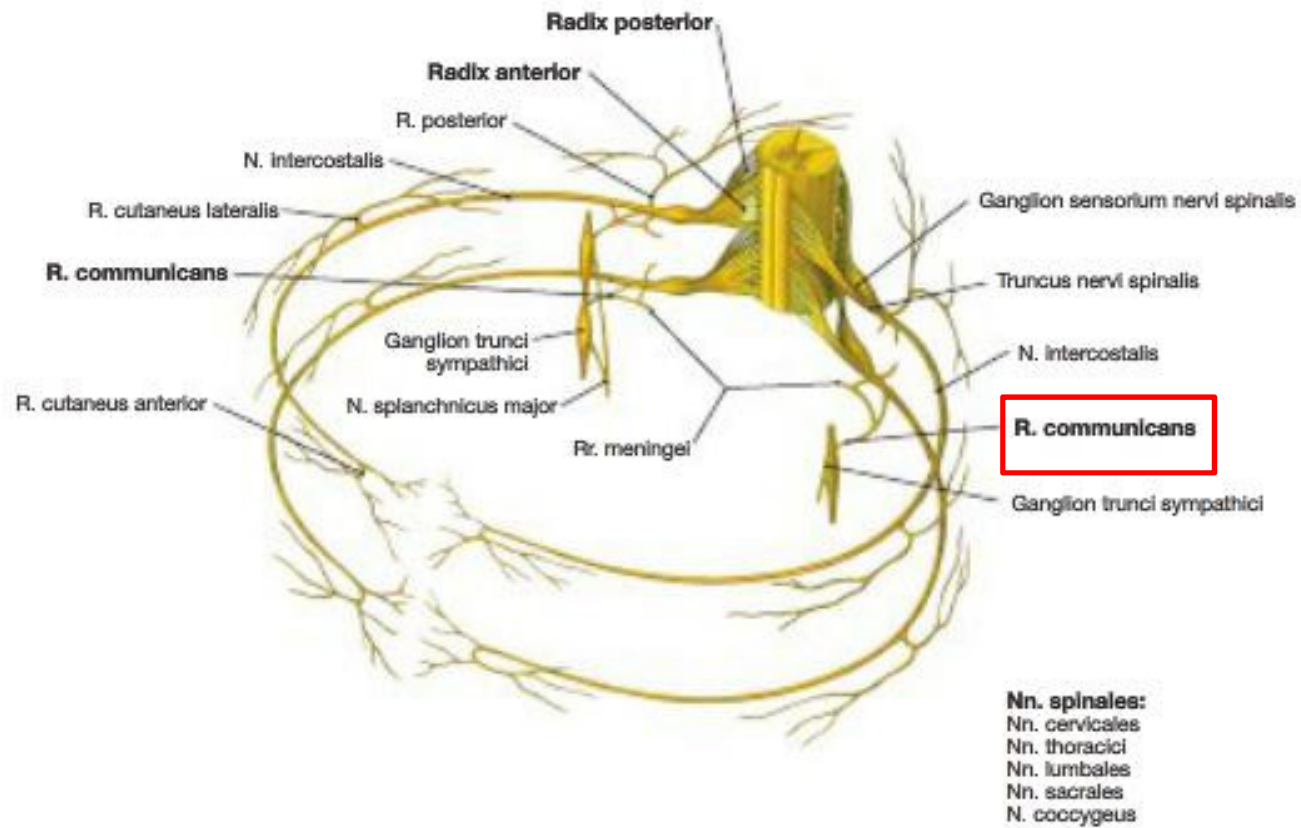
**Spinalganglion**



**A. vertebralis**

# Spinalnerven

Spinalnerv





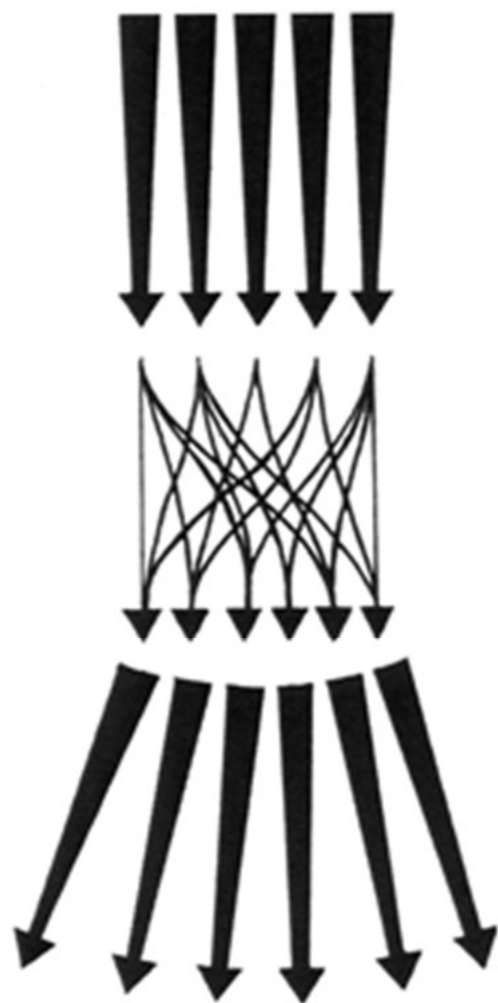
Ramus **anterior / ventralis**  
des Spinalnerven

Durchflechtung = Plexus

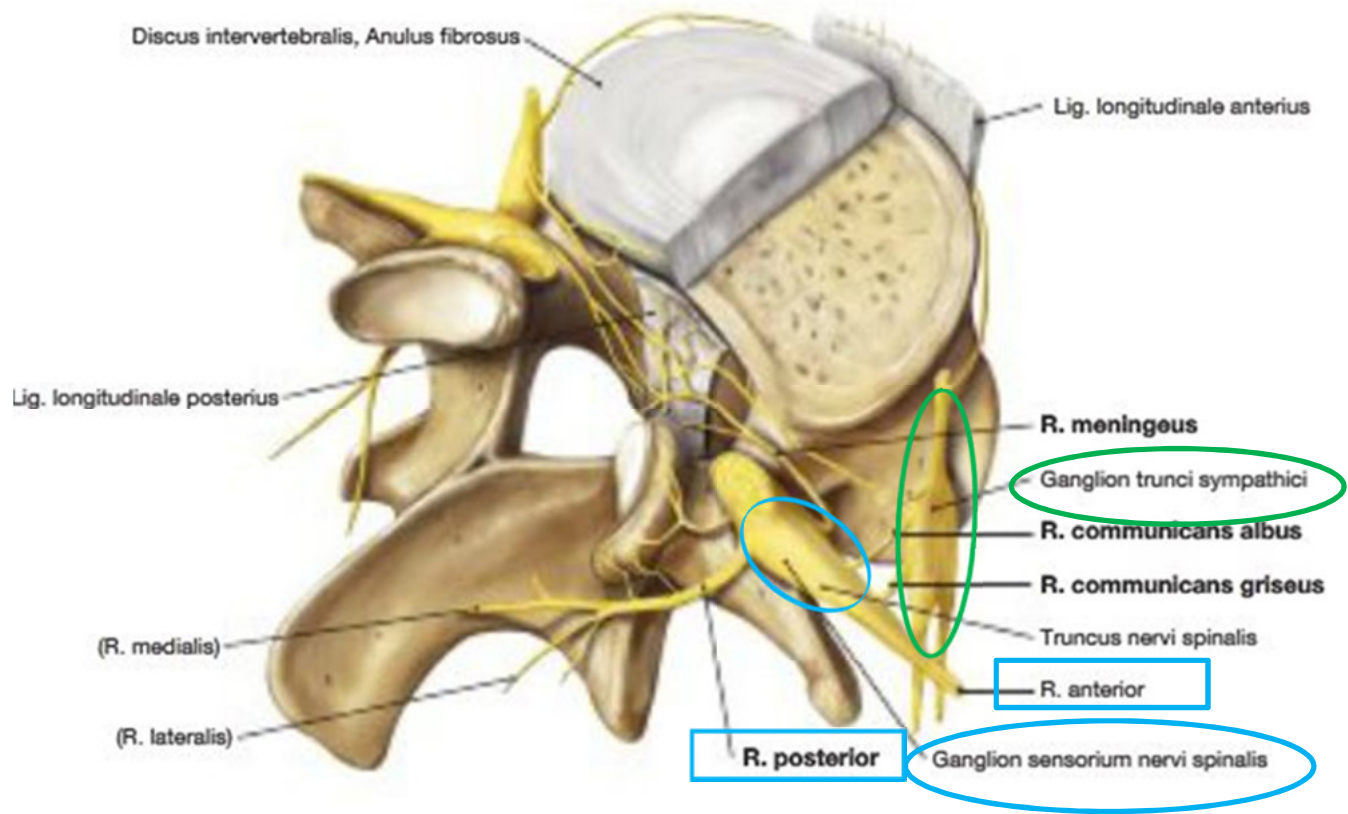
die verschiedenen Faseranteile  
ENTFLECHTEN sich wieder in der  
Peripherie

periphere Nerven

Periphere Nerven enthalten Faser-  
Anteile verschiedener Spinalnerven

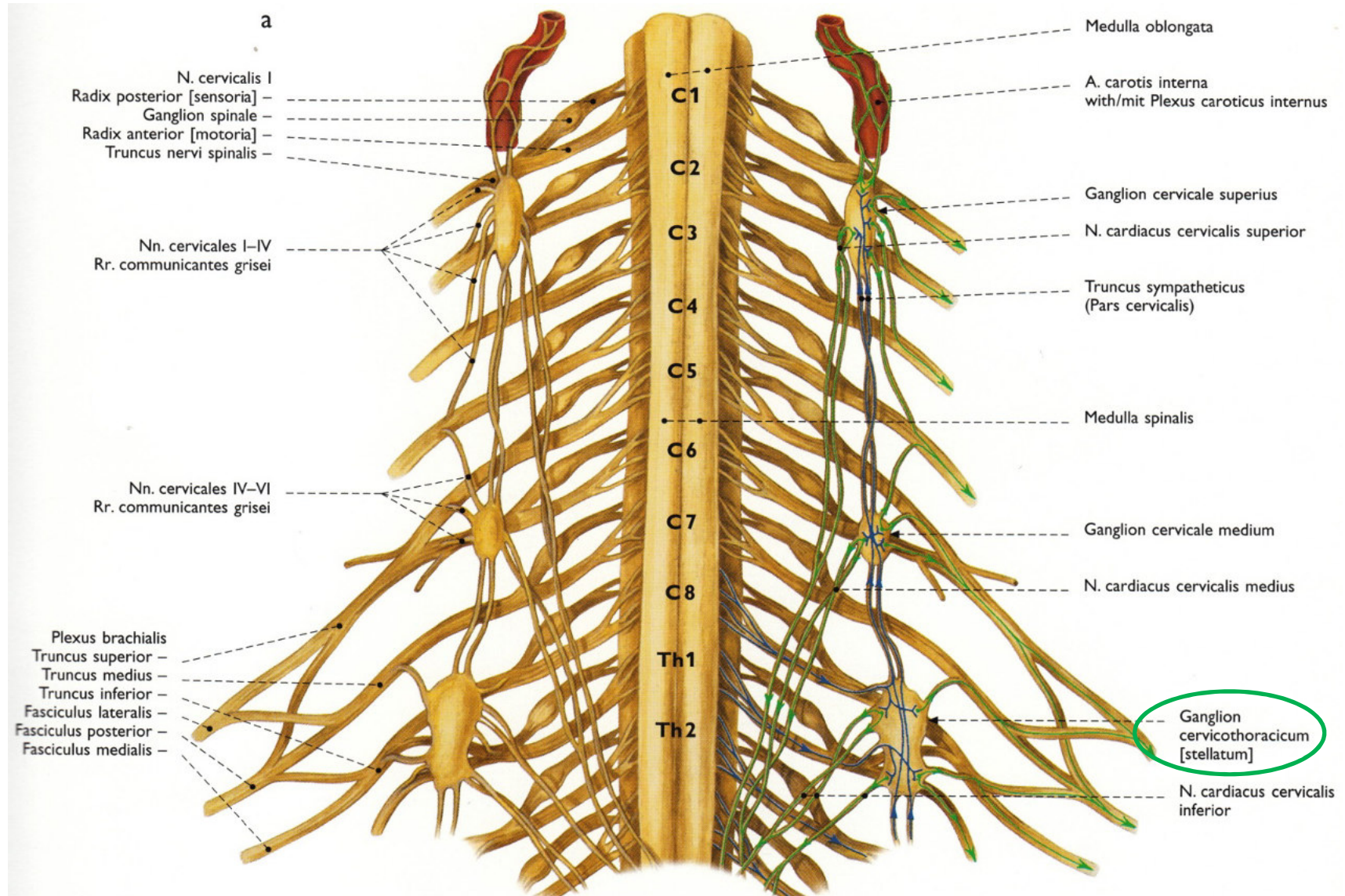






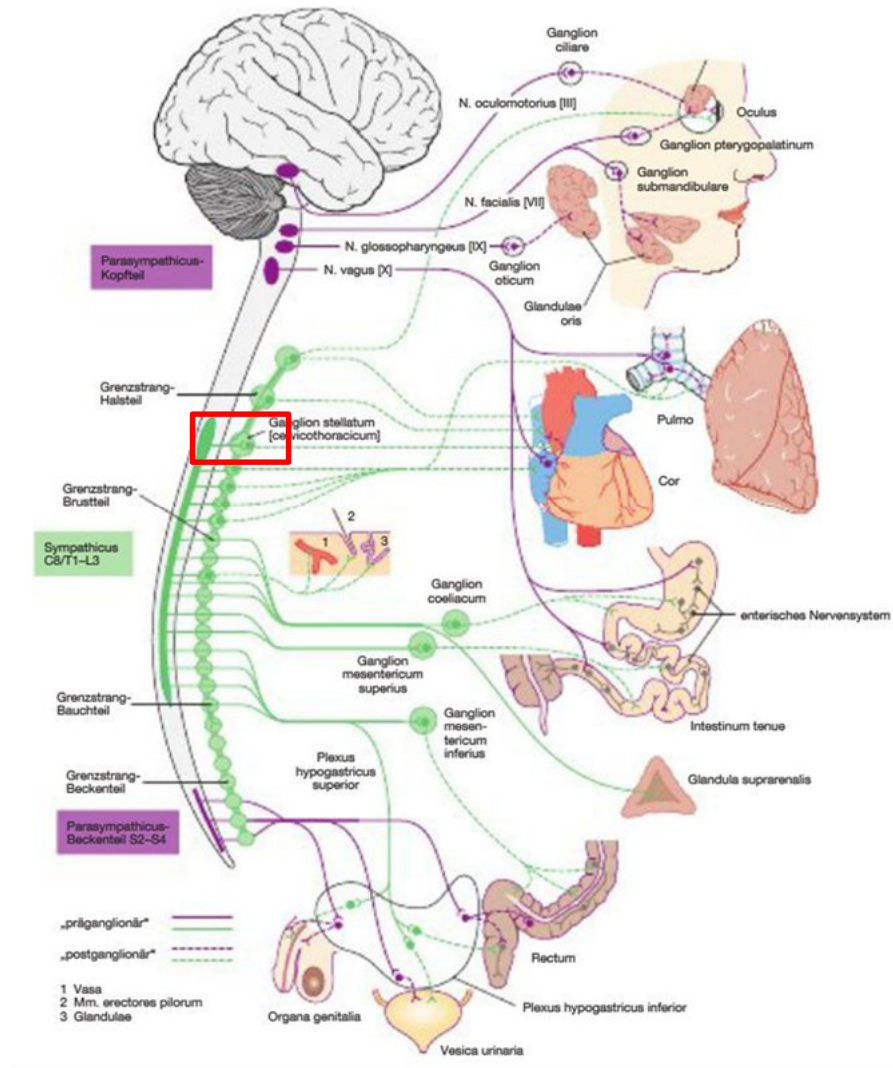


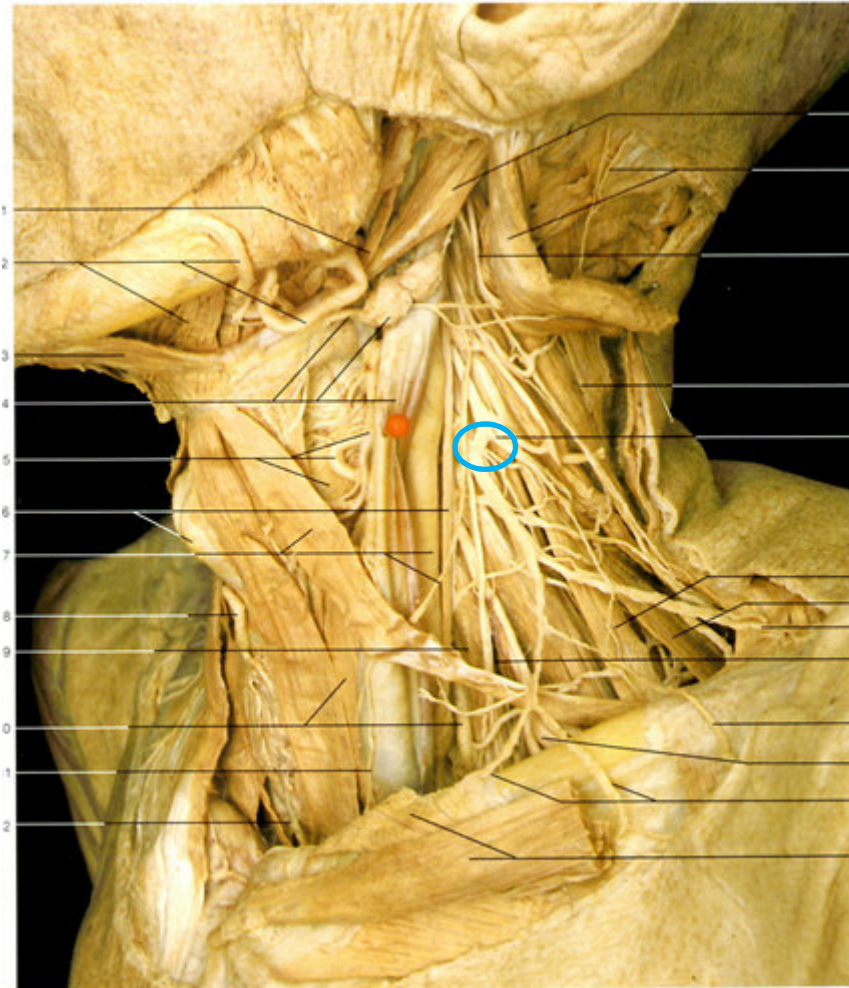
# Ganglion stellatum



# Verschmelzung Hals- und Brustganglion

## Autonomes Nervensystem





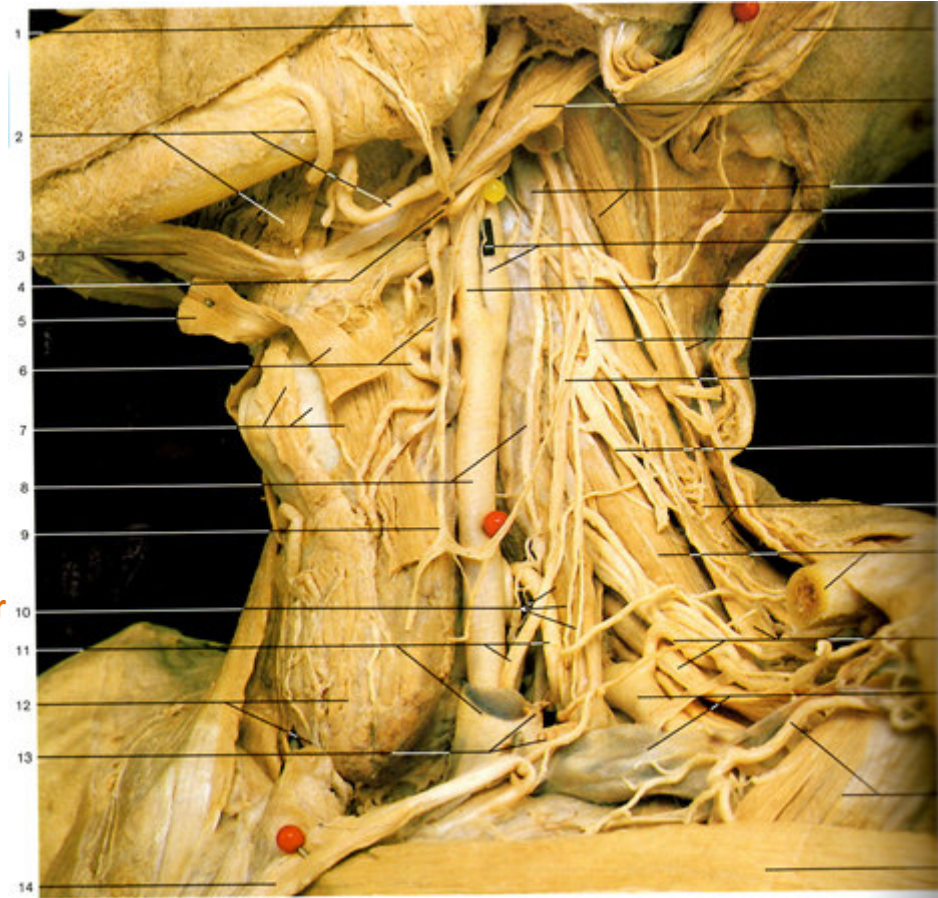
13  
14  
15  
16  
17 **Plexus cervicalis**  
**C1-C4**

18 **M. scalenus posterior**  
19  
20  
21

22  
23 **Plexus brachialis**  
**C5-Th1**  
24  
25



**M. scalenus anterior**



**M. scalenus medius**

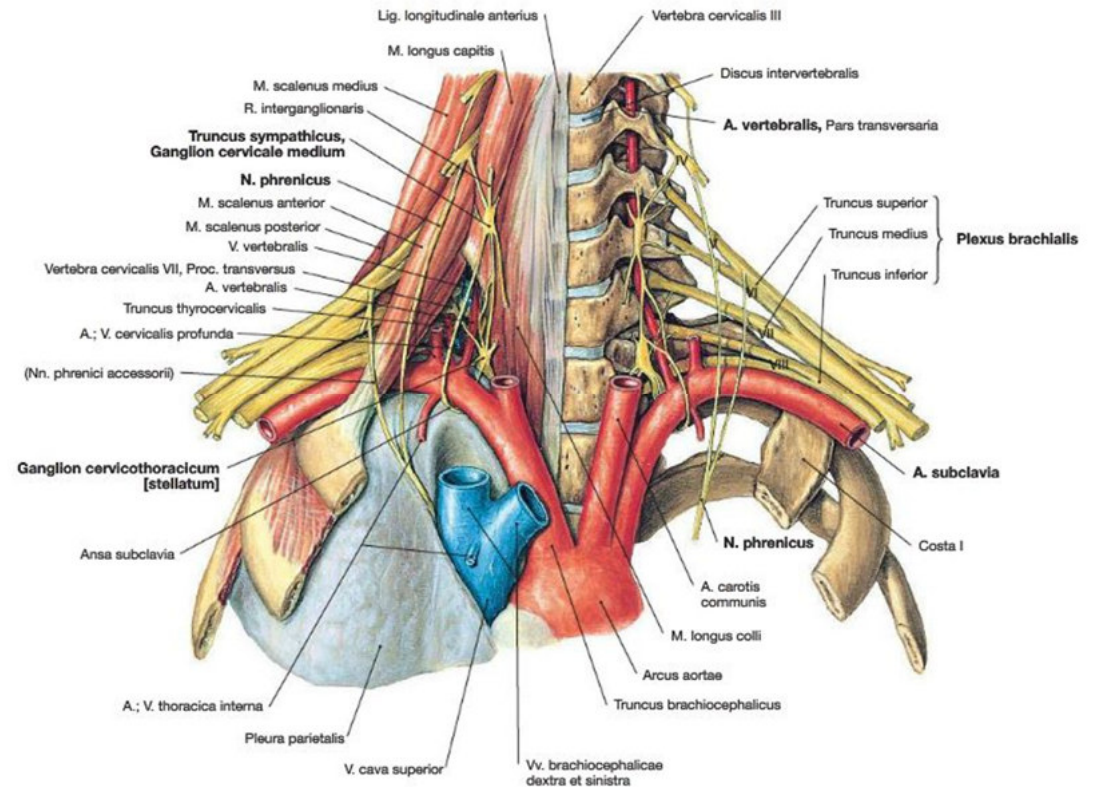
**A. & V. subclavia**

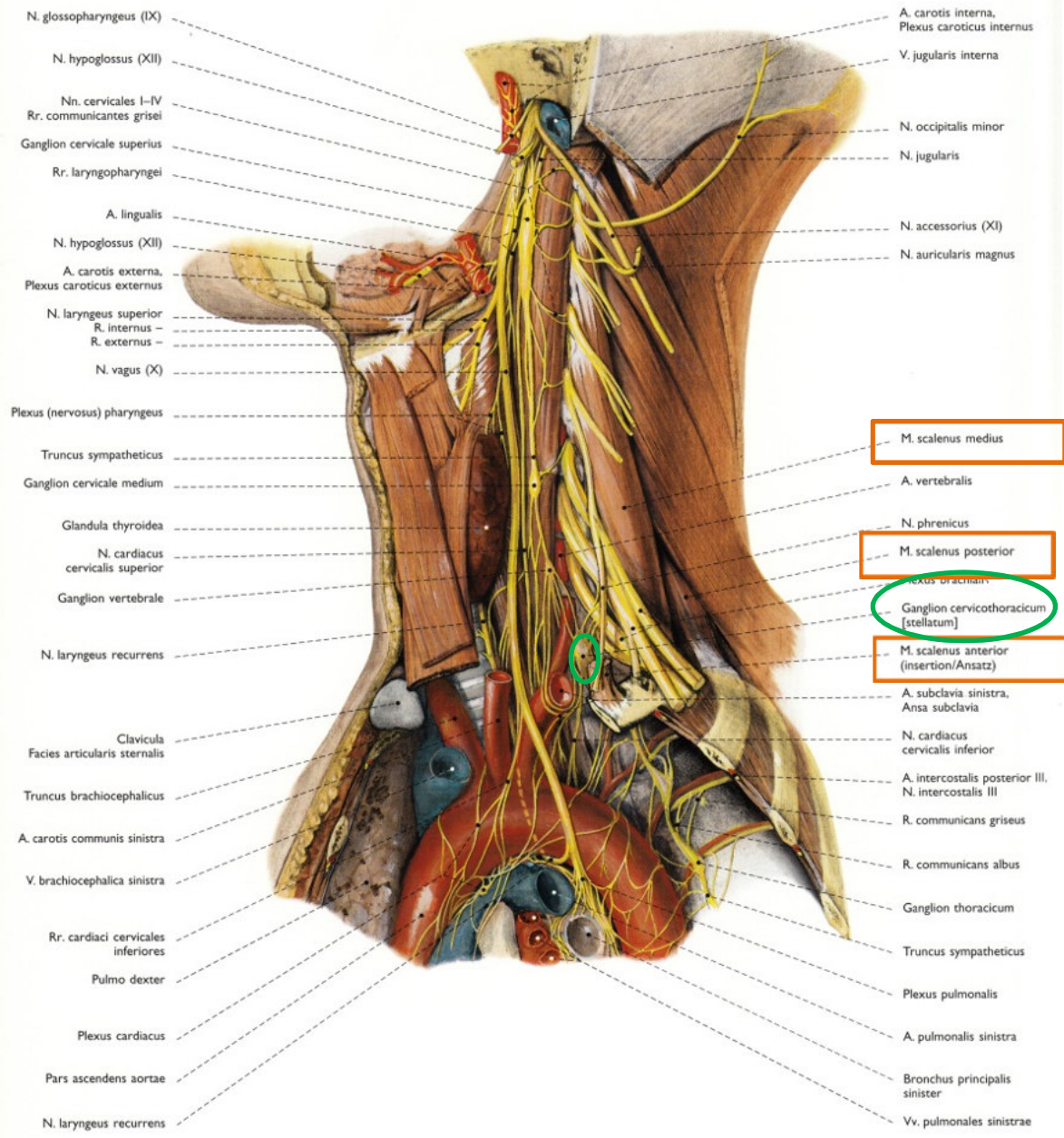




# obere Thorax Apertur

- Truncus brachiocephalicus
- A. carotis communis
- A. subclavia
- Vv. brachiocephalicae
- Nerven zur oberen Extremität
- Truncus sympathicus



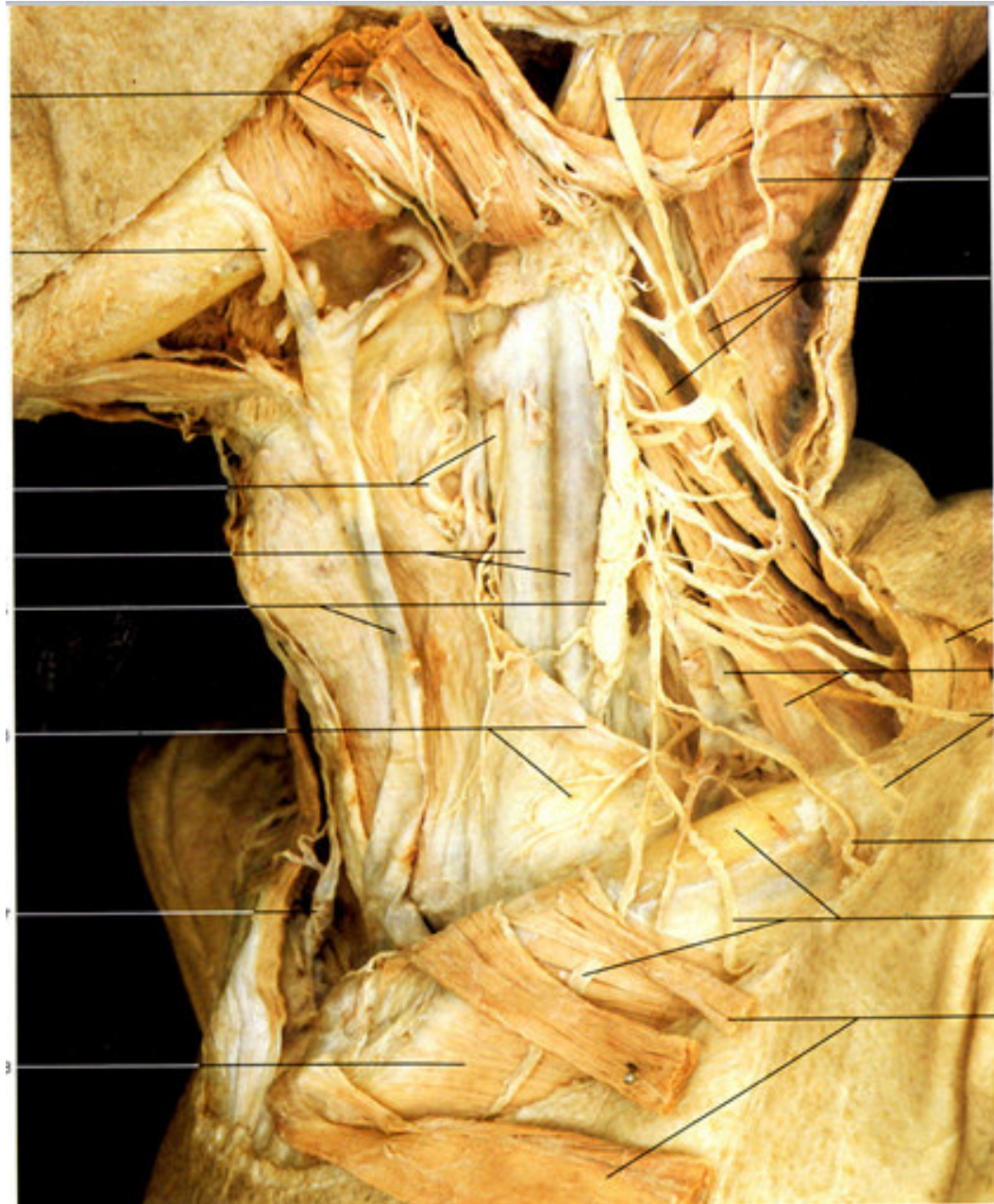


96 (Collum) et Thorax

96 Autonomic nervous system in the neck and the upper part of the thorax (60%)  
 Left lateral aspect

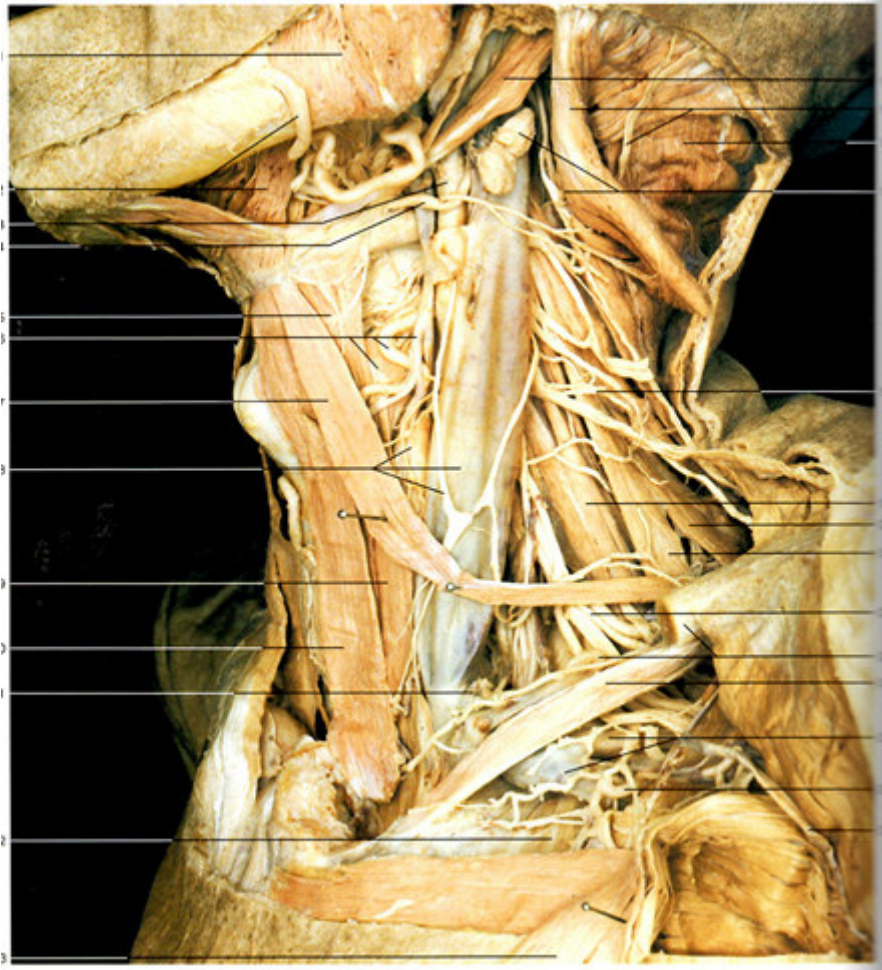
96 Autonomes Nervensystem im Hals und oberen Brustbereich (60%)  
 Linke Seitenansicht





**M. scalenius medius**





Plexus cervicalis

M. scalenus medius

M. scalenus posterior

Plexus brachialis

# Skalenuslücke

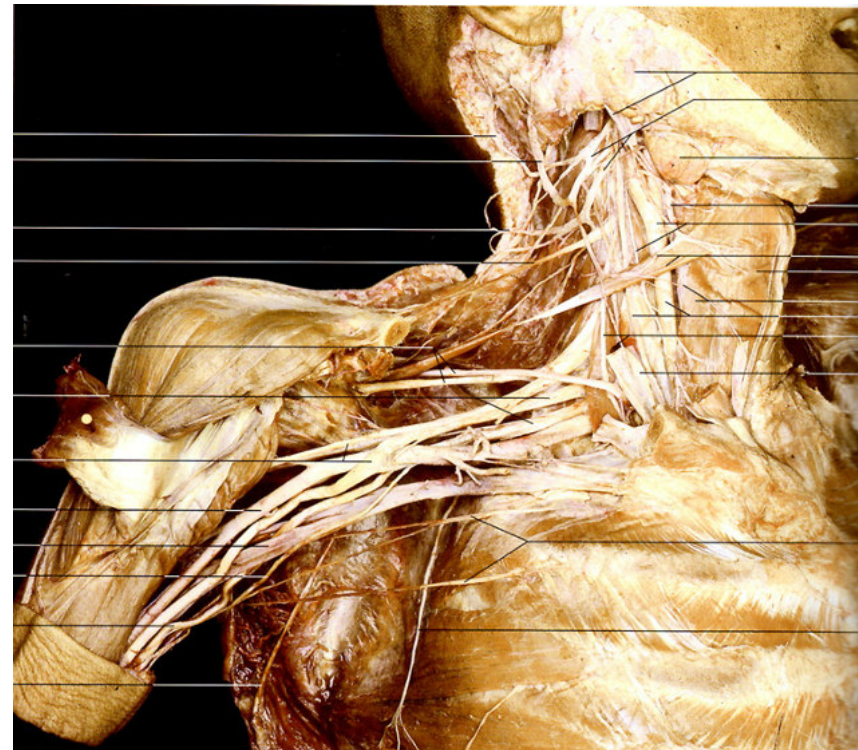
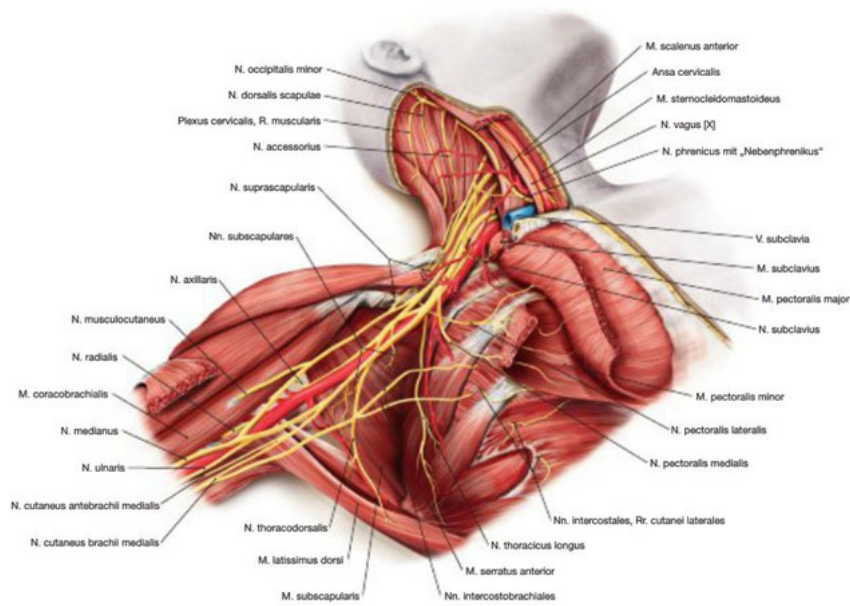
- Armvenengeflecht
- Plexus brachialis
- A. subclavia

## V. Subclavia

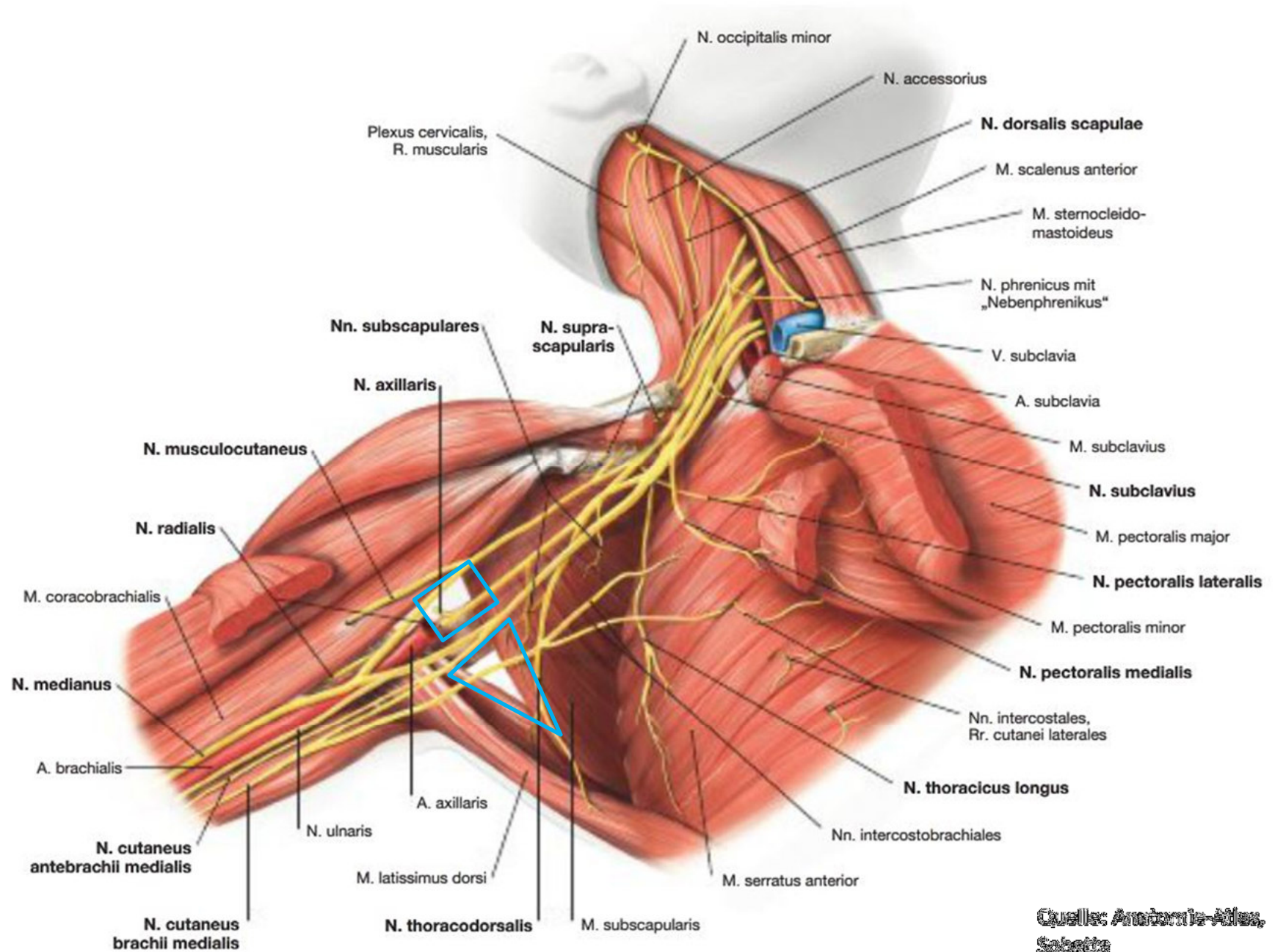
- vor M. scalenus anterior
- hinter M. sternocleidomastoideus

# Plexus brachialis

## Rami anteriores C5-Th1

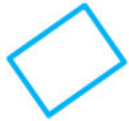








# Achsellücken



## **laterale Achsellücke:**

N. axillaris

A. & V. circumflexa humeri posterior



## **mediale Achsellücke:**

A. & V. circumflexa scapulae

## **Trizepsschlitz:**

N. radialis

A. profunda brachii

## Armnerven des Plexus brachialis

